



العقيفة للراتنجات الكيمائية

شركة مصنع أحمد سعيد عقيفة
Ahmed S. Afifi Factory Co.



Company Profile

www.afifi.com.sa

ABOUT US

Afifi Chemicals & Resins Co. is a leading manufacturer and supplier of high-quality unsaturated polyester resin. Established in 2010, we have been providing innovative solutions to our clients for over 10 years. We are committed to providing our customers with the best quality products that meet their needs and exceed their expectations. Our team of experts is dedicated to ensuring that our products are of the highest quality and are manufactured using the latest technology and equipment. At Afifi Chemicals and Resins, we pride ourselves on our commitment to customer satisfaction, and we strive to build long-lasting relationships with our clients. At Afifi Chemicals & Resins Co., we understand the unique needs of our clients and work closely with them to provide customized solutions that meet their specific requirements. Our commitment to quality, innovation, and customer satisfaction has earned us a reputation as a trusted partner in the industry. We have the expertise and resources to deliver products that meet your exact specifications.

VISION

We aim to make our company a leading, competitive, reliable, and global supplier of quality chemical solutions for our valued customers worldwide.

MISSION

Continuously produce and develop quality products at a competitive price to meet the demands of our valued customers by putting the environment and safety first, and by adhering to ethical laws.

Quality policy:

Our quality policy depends on 4 main principles:

Consistent

➤ To acknowledge the quality objective and adhere to SOP completely for consistent product quality.

Every member of staff is given a responsibility to keep quality assurance achieved under the direction everywhere and anytime.

Involvement

Satisfaction

➤ Fulfill the requirements of customers respectively with excellent and proper products and satisfy our clients.

To comply with regulations, and to maintain a safety and healthy workplace. Reaching endless innovation and advancement.

Sustainability

Products

Fiber Resin (FRP/GRP COMPOSITE)

At Afifi Chemicals and Resins, we produce high-quality resin that meets the highest industry standards.

Our product range consists of Ortho& ISO based resins for hand lay-up and spray-up GRP production methods.

It is possible to produce composite parts for numerous applications like boats, buses, trucks, masonry, exterior architectural elements, cabins, tanks and Swimming pools. Our resin is the perfect choice for your project.

Materials can provide as thixotropic or non thixotropic, promoted or non promoted with good shelf.

Advantages

- Versatile and suitable for hand lay-up and spray up processes.
- Highly resistant to corrosion, chemicals, and UV radiation.
- Lightweight with excellent mechanical properties
- Provides strong and durable composite structures.
- Easy to apply and cures quickly.
- Meets the highest industry standards for quality and performance



Products

CASTING

At our company, we are committed to providing our customers with high-quality casting resins that meet the highest industry standards for quality and performance. Whether you are looking to produce kitchen countertops or trinkets, our casting resins are the perfect solution for all your casting needs.

We can provide the material as promoted or non-promoted with shelf stability

Advantages

- Suitable for casting artificial marble and solid surface processing.
- High filler capacity and Low shrinkage.
- Economical resins that leave elegant appearance on the final product.
- Low cost compared to other materials.
- High filler capacity for high strength and durability
- Prevents twisting and has high demolding speed for mass production.
- High chemical and UV resistance.



Products

Filament Winding

Our resin for filament winding is a highly effective and efficient production method for producing high-quality cylindrical structures that are strong, durable, and resistant to environmental factors.

Its versatility and precision make it a popular choice for a wide range of industries and applications.

Advantages

- Produces strong and durable composite structures
- Resistant to corrosion, impact, and other environmental factors
- Allows for precise control over thickness and strength of the composite material
- Ideal for producing complex shapes and sizes
- Suitable for a wide range of applications in industries such as aerospace, automotive, and construction
- Efficient production method
- Lightweight material
- Low maintenance required
- Long-lasting lifespan
- Cost-effective production method.



Products

SMC/DMC

SMC/BMC resins are known for their high strength-to-weight ratio, making them ideal for applications where lightweight and durable materials are required. They are also resistant to corrosion, impact, and other environmental factors, making them suitable for use in harsh environments.

SMC/BMC resins are cost-effective to produce, making them an attractive option for a wide range of industries, including automotive, aerospace, and construction.

Advantages

- Ability to be molded into complex shapes and sizes.
- Cost-effective production
- Suitable for a wide range of industries, including automotive, aerospace, and construction
- Durable and long-lasting
- Low maintenance requirements
- Good electrical insulation properties
- High dimensional stability
- Can be reinforced with various materials to enhance specific properties.



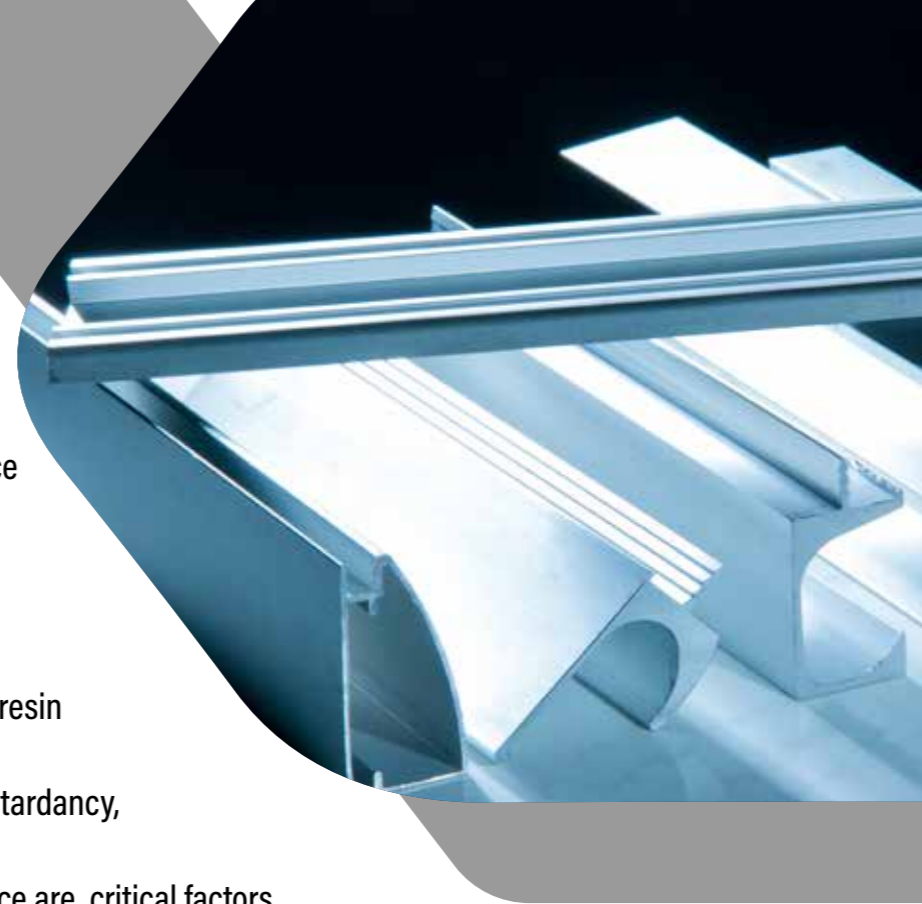
Products

Pultrusion

One of the key advantages of ACR resin for pultrusion is its ability to be customized to meet specific performance requirements. This is achieved by selecting the appropriate resin formulation and fiber type to achieve the desired mechanical properties such as strength, stiffness, and durability. Pultrusion resin can also be modified with various additives to enhance specific properties, such as flame retardancy, UV resistance, and impact resistance.

Advantages

- Excellent wetting properties that create a strong bond between fibers and resin.
- Customizable to meet specific performance requirements by selecting the appropriate resin formulation and fiber type.
- Can be modified with various additives to enhance specific properties such as flame retardancy, UV resistance, and impact resistance.
- Well-suited for applications where high strength-to-weight ratio and corrosion resistance are critical factors.
- Cost-effective to produce.
- Low maintenance requirements.
- Cost-effective production method.



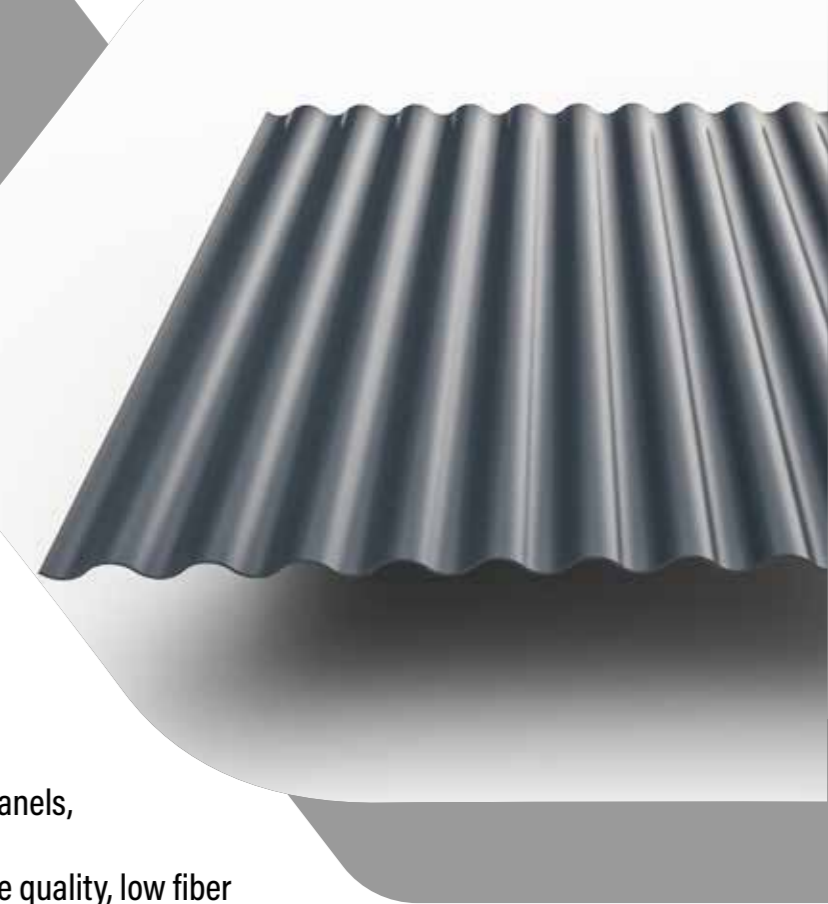
Products

Roof lite

Roof lite resin is a type of resin that has become increasingly popular in recent years due to its versatility and reliability. One of the key benefits of this resin is its ability to be processed using continuous laminating, which allows to produce sheets at a high production speed. This makes it an efficient and cost-effective option for manufacturers who need to produce large quantities of flat, corrugated, transparent or colored sheets. The use of roof lite resin is particularly prevalent in the production of foam sandwich panels, refrigerated vehicle panels, truck panels, and RV panels. These applications require a material that is durable, lightweight, and easy to work with, all of which are characteristics of roof lite resin.

Advantages

- Durable and lightweight, making it ideal for use in foam sandwich panels, refrigerated vehicle panels, truck panels, and RV panels.
- Offers a range of unique properties for different applications, such as UV resistance, high surface quality, low fiber print through, and flame retardancy.
- Ideal for outdoor applications where exposure to sunlight is a concern.
- Suitable for use in decorative panels due to its low fiber print through in gelcoated applications.
- Used in applications where safety is a concern, such as in the construction of fire-resistant walls or partitions.
- Good electrical insulation properties
- High dimensional stability
- Can be reinforced with various materials to enhance specific properties.



Products

Acrylic Backups

Back up resin is a type of acrylic backing application that is specifically designed to reinforce acrylic sheets, particularly those used in acrylic bath tubs. This type of resin has excellent adhesion properties, making it ideal for use with acrylic sheets.

When applied correctly, back up resin can help to strengthen and protect acrylic sheets, ensuring that they are able to withstand daily wear and tear. Whether you are looking to repair an existing acrylic bathtub or are in the process of building a new one, back up resin can provide the support and reinforcement you need to ensure that your project is a success.

Advantages

- Excellent adhesion properties.
- Reinforces acrylic sheets, particularly in bathtubs.
- Strengthens and protects acrylic sheets.
- Provides support and reinforcement for projects.
- Ensures project success.



10

Products

RTM & INFUSION

RTM and Infusion resins are preferred by the world's leading composites parts manufacturers due to their unique properties. Our Infusion/RTM type resins are ideal for marine applications, wind turbine blades, and construction applications. The infusion process involves impregnating dry fibers with resin using a vacuum, while RTM involves injecting resin into a closed mold under pressure. Both processes require high-quality resins that can withstand the stresses of the manufacturing process and provide the necessary strength and durability for the finished product.

Advantages

- Low viscosity for excellent fiber wet-out and flow properties.
- High HDT value and minimal shrinkage.
- Perfect for applications of vehicle parts and water slide production.
- It has good mechanical properties and impact resistance.
- High Strength and durability for final products.
- Trusted by manufacturers worldwide for outstanding performance and reliability.

11



Products

MARINE APPLICATION

Marine resin is a specialized type of resin that is designed specifically for use in marine applications. It is typically used to coat and protect boats, yachts, and other watercraft from the damaging effects of saltwater, UV radiation, and other environmental factors.

Advantages

- High Chemical Resistance.
- Exceptional durability and resistance to corrosion.
- Formulated to withstand harsh marine environment conditions.
- Offers excellent adhesion properties, bonding strongly to a variety of surfaces.
- Can be used to repair cracks and damage in fiberglass hulls.



Products

GELCOATS & TOPCOATS

Overall, gelcoats and topcoat resins are essential components in the manufacturing of high-quality composite products that require superior chemical and weather resistance and an attractive appearance.

Gelcoats resins are typically clear or pigmented and can be applied in various thicknesses depending on the desired level of protection. They offer excellent UV resistance, weather resistance, and scratch resistance, making them ideal for use in marine, automotive, and aerospace applications.



Products

ANCILLARY PRODUCTS

Ancillary products are materials that are used in the manufacturing of composite products to aid in the production process.

These products are not the main components of the composite material but are essential for achieving the desired quality and finish of the final product. Ancillary products include release agents, surface sealers, flame retardants, and other additives that improve the performance and properties of the composite material.

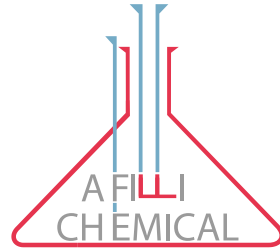
These products are available in different weights and quantities to meet the specific needs of different manufacturing processes.

The use of ancillary products is crucial in ensuring the efficient production of high-quality composite products.



Ancillary Products List:

- Honey Wax & Edge Wax
- Paraffin wax solution
- TBC solution
- PVA Solution
- Marble Polish
- Clay



العفيفي للراتنجات الكيمائية

شركة مصنع أحمد سعيد عفيفي
Ahmed S. Afifi Factory Co.

Saudi Arabia Jeddah

Tel: 966126092333+ ext: 333

Fax: 966126093444+

p.o.box 31910 Jeddah 21418

Facebook/afifi group

twitter @afifimarble

instagram #afifimarble